

## Property Profile Y<sub>2</sub>O<sub>3</sub> - Coating

- High wear resistance
- High stability in reactive melts

Product Number:

**IKH 16005**

## Grain Size Distribution

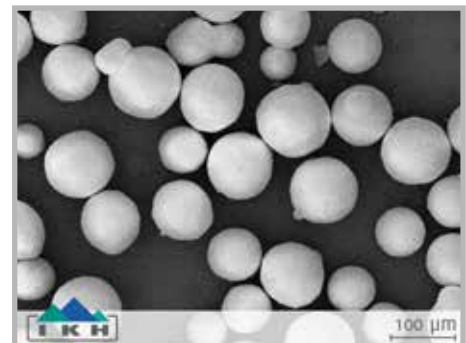
Grain Size	Distribution
36	-106 +45 μm
20	-90 +45 μm
19	-63 +16 μm

\*other grainsizes on request



## Typical Chemical Composition

Y <sub>2</sub> O <sub>3</sub>	99,5
Fe <sub>2</sub> O <sub>3</sub>	< 0,1 %
Al <sub>2</sub> O <sub>3</sub>	< 0,1 %
CaO	< 0,1 %
SiO <sub>2</sub>	< 0,1 %



## Coating Properties

Hardness: approx. 1400 HV 0,3  
 Applicable up to 2.200 °C

## Spray Parameters

Plasmagenerator	F4
Plasma Gas Ar (SLPM)	42
Plasma Gas H <sub>2</sub> (SLPM)	11
Current (A)	550
Spray Distance (mm)	120

