

Property Profile Al₂O₃/TiO₂ 60/40 - Coating

- High wear resistance
- Chemical resistance against acids
- Poor wettability
- Ductility due to TiO₂-content

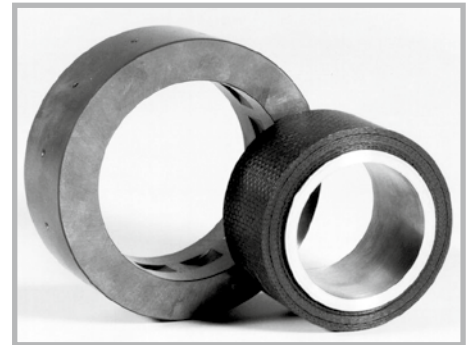
Product Number:

IKH 2302

Grain Size Distribution

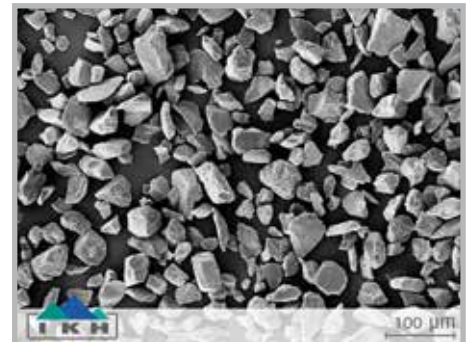
Grain Size	Distribution
20	-90 +45 μm
16	-45 +22 μm
14	-45 +5 μm
09	-30 +10 μm
07	-25 +5 μm

* other grainsizes on request



Typical Chemical Composition

Al ₂ O ₃	base
SiO ₂	< 0,5%
TiO ₂	~ 40,0%
Fe ₂ O ₃	< 0,4%
MgO	< 0,2%
CaO	< 0,1%



Coating Properties

Hardness: approx. 1.000 HV 0,3
 Applicable up to 540 °C
 Good Grinding and Polishing Properties

Spray Parameters

Plasmagenerator	F4
Plasma Gas Ar (SLPM)	43
Plasma Gas H ₂ (SLPM)	14
Current (A)	580
Spray Distance (mm)	120

