

Property Profile Cr₂O₃/TiO₂ 60/40 - Coating

- Wear resistance
- Ductility
- Good finishing properties

Product Number:

IKH 7001

Grain Size Distribution

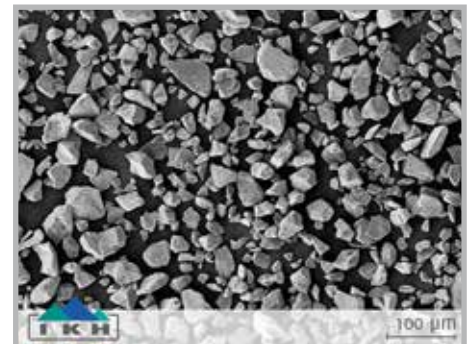
Grain Size	Distribution
20	-90 +45 µm
19	-63 +16 µm
16	-45 +22 µm
14	-45 +5 µm
08	-30 +5 µm
07	-25 +5 µm

*other grainsizes on request



Typical Chemical Composition

Cr ₂ O ₃	base
SiO ₂	< 0,1 %
TiO ₂	~ 40,0%
Fe ₂ O ₃	< 0,1 %
MgO	< 0,1 %
CaO	< 0,1 %
Al ₂ O ₃	< 0,1 %
Cr met.	< 0,1 %



Coating Properties

Hardness: approx. 900 HV 0,3

Applicable up to 500 °C

Melting Point: approx. 1.925 °C

Spray Parameters

Plasmagenerator	F4
Plasma Gas Ar (SLPM)	40
Plasma Gas H ₂ (SLPM)	9
Current (A)	500
Spray Distance (mm)	120

