



Cr₂O₃/SiO₂/TiO₂ 92/5/3 fused & crushed

Property Profile Cr₂O₃/SiO₂/TiO₂ 92/5/3 - Coating

- Wear resistance
- Chemical resistance
- Electrically isolating

Product Number:

IKH 8001

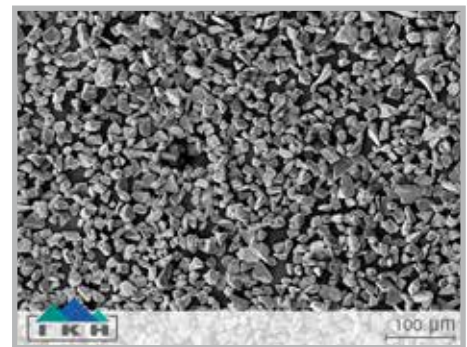
Grain Size Distribution

Grain Size	Distribution
20	-90 +45 µm
19	-63 +16 µm
16	-45 +22 µm
14	-45 +5 µm
08	-30 +5 µm
07	-25 +5 µm

*other grainsizes on request

Typical Chemical Composition

Cr ₂ O ₃	base
SiO ₂	~ 5,0%
TiO ₂	~ 3,0%
Fe ₂ O ₃	< 0,1%
MgO	< 0,1%
CaO	< 0,1%
Al ₂ O ₃	< 0,1%
Cr met.	< 0,1%



Coating Properties

Hardness: approx. 900 HV 0,3

Applicable up to 500 °C

Melting Point: approx. 1.900–2.200 °C

Spray Parameters

Plasmagenerator	F4
Plasma Gas Ar (SLPM)	40
Plasma Gas H ₂ (SLPM)	9
Current (A)	550
Spray Distance (mm)	120

