

Property Profile Ni/Cr - Coating

- Corrosion resistance
- Bond coat

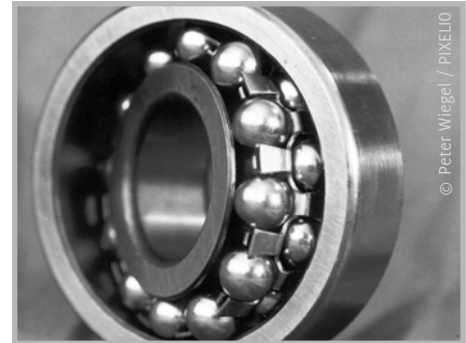
Product Number:

IKH 810

Grain Size Distribution:

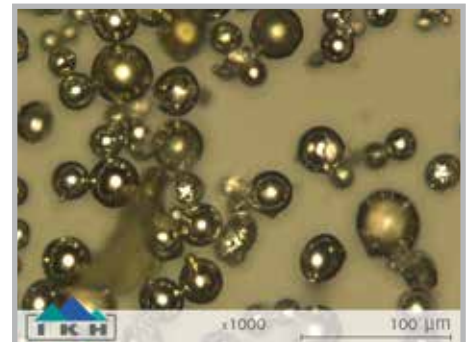
Grain Size	Distribution
19	-63 +16 μm
16	-45 +22 μm
07	-25 +5 μm

*other grainsizes on request



Typical Chemical Composition

Si	1,5 %
C	< 0,2 %
Mn	2,5 %
Fe	1,0 %
Cr	18-21 %



Coating Properties

Applicable up to 1.000 °C

Spray Parameters

Plasmagenerator	F4
Plasma Gas Ar (SLPM)	45
Plasma Gas H ₂ (SLPM)	6
Current (A)	500
Spray Distance (mm)	120

