

## Property Profile 316 L Spezial - Coating

- Good corrosion resistance
- Resistance against stress corrosion cracking
- Non-hardenable by heat treatment

Product Number:

**IKH 832**

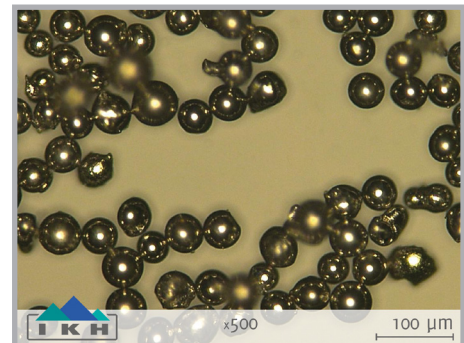
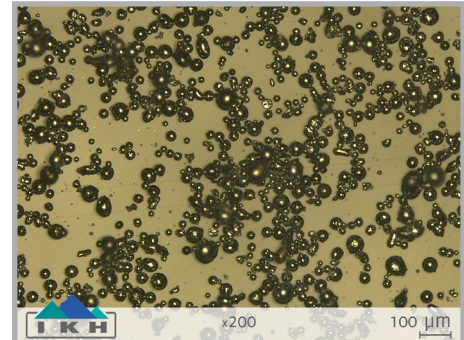
## Grain Size Distribution

Grain Size	Distribution
17	-53 +20 $\mu\text{m}$

\*other grainsizes on request

## Typical Chemical Composition

Iron	Base
Carbon	0,03% max.
Manganese	1,50% max.
Phosphorus	0,010% max.
Sulfur	0,01% max.
Silicon	1,10% max.
Chromium	26,00-28,00%
Nickel	13,00-15,00%
Molybdenum	2,00-3,00%



## Typical Physical Composition

Apparent density:	~ 4 g/cm <sup>3</sup>
Tap density:	~ 4,5 g/cm <sup>3</sup>

## Typical applications include:

- Heat exchangers
- Pharmaceuticals
- Jet engine parts
- Marine applications
- Architectural applications
- Medical implants
- Fasteners

