

## Grain Size Distribution

016	-22 +5 μm
017	-25 +5 μm
027	-45 +5 μm
030	-45 +22 μm

Other grain sizes on request

## Chemical Composition

Cr <sub>2</sub> O <sub>3</sub>	base
SiO <sub>2</sub>	< 0.1 %
TiO <sub>2</sub>	~ 40.0 %
Fe <sub>2</sub> O <sub>3</sub>	< 0.1 %
MgO	< 0.1 %
CaO	< 0.1 %
Al <sub>2</sub> O <sub>3</sub>	< 0.1 %
Cr met.	< 0.1 %

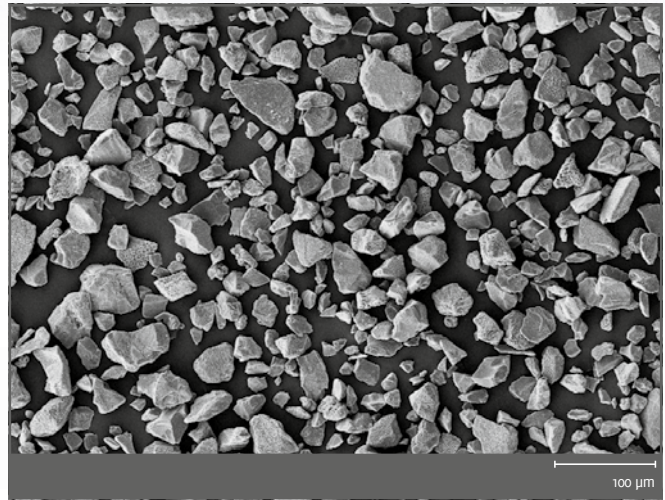
These properties are typical but do not constitute specifications

## Coating Properties

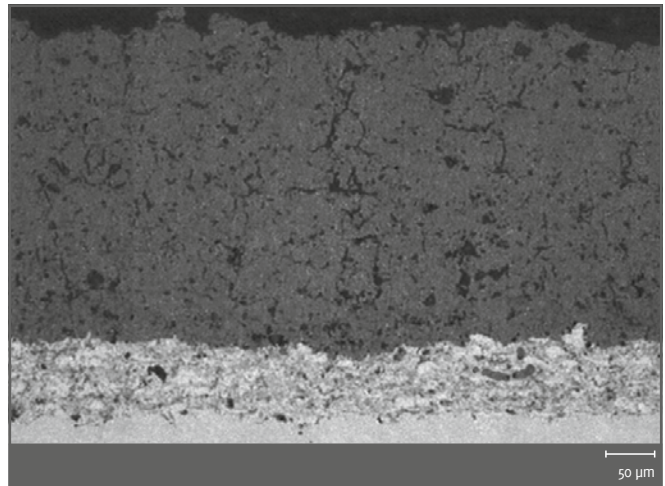
- Hardness: ~ 900HV<sub>0.3</sub>
- Max. Application Temperature: 500°C
- Melting Point: ~ 1925°C

## Property Profile (Coating)

- Wear resistance
- Good finishing properties
- Ductility



Micro section



Micro section

