

# IKH 7103

## Cr<sub>2</sub>O<sub>3</sub>/TiO<sub>2</sub> 75/25 reaction sintered

### Grain Size Distribution

020	-30 +10 μm
030	-45 +22 μm

Other grain sizes on request

### Chemical Composition

Cr <sub>2</sub> O <sub>3</sub>	base
SiO <sub>2</sub>	< 0.1 %
TiO <sub>2</sub>	~ 25.0 %
Fe <sub>2</sub> O <sub>3</sub>	< 0.1 %
MgO	< 0.1 %
CaO	< 0.1 %
Al <sub>2</sub> O <sub>3</sub>	< 0.1 %
Cr met.	< 0.1 %

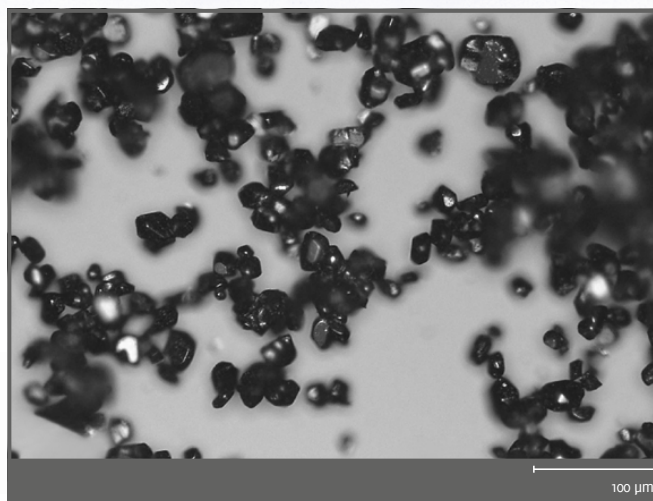
These properties are typical but do not constitute specifications

### Coating Properties

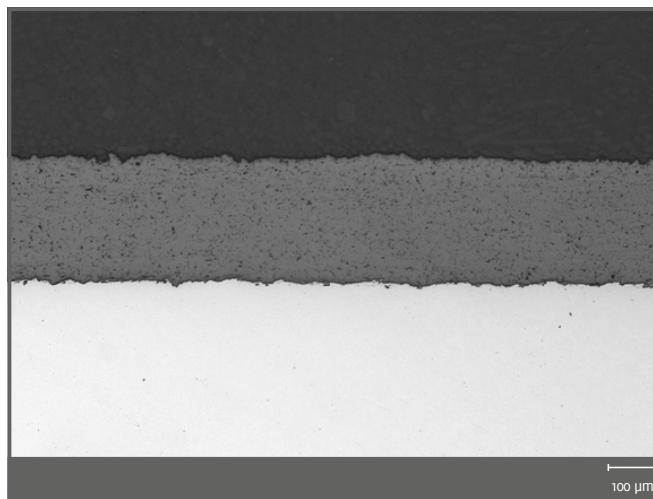
- Hardness: ~ 900HV<sub>0.3</sub>
- Max. Application Temperature: 500°C

### Property Profile (Coating)

- Wear resistance
- Good finishing properties
- Ductility



Micro section



Micro section

