

IKH 5001

Al₂O₃/SiO₂ 70/30 fused (Spinnell)

Grain Size Distribution

017	-25 +5 µm
019	-30 +5 µm
027	-45 +5 µm
030	-45 +22 µm
033	-63 +16 µm
036	-90 +45 µm

Other grain sizes on request

Chemical Composition

Al ₂ O ₃	base
SiO ₂	18 – 32 %
Fe ₂ O ₃	< 0.25 %
MgO	< 0.1 %
CaO	< 0.1 %
TiO ₂	< 0.25 %
Na ₂ O	< 0.2 %

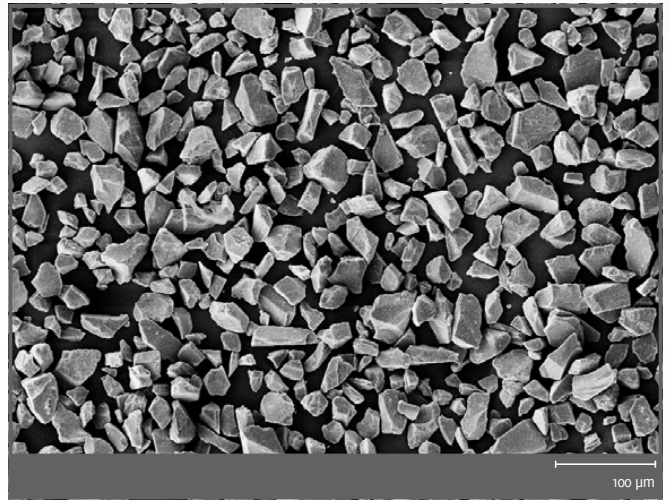
These properties are typical but do not constitute specifications

Coating Properties

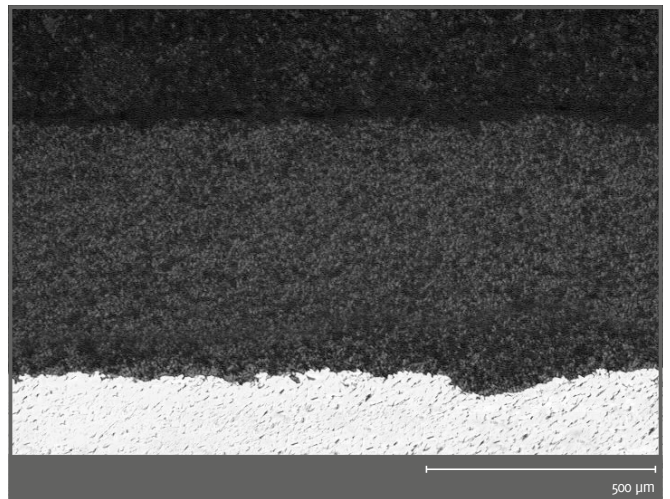
- Hardness: ~ 800 HV_{0,3}
- Max. Application Temperature: 1000 °C

Property Profile (Coating)

- High wear resistance
- Corrosion resistance



Micro section



Micro section

