

# IKH 7303

## Cr<sub>2</sub>O<sub>3</sub>/TiO<sub>2</sub> 97/3 reaction sintered

### Grain Size Distribution

017	-25 +5 μm
020	-30 +10 μm
024	-38 +10 μm
029	-45 +10 μm
030	-45 +22 μm

Other grain sizes on request

### Chemical Composition

Cr <sub>2</sub> O <sub>3</sub>	base
TiO <sub>2</sub>	2.5 - 4 %
SiO <sub>2</sub>	< 0.15 %
Al <sub>2</sub> O <sub>3</sub>	< 0.1 %
Fe <sub>2</sub> O <sub>3</sub>	< 0.1 %
MgO	< 0.1 %
CaO	< 0.1 %

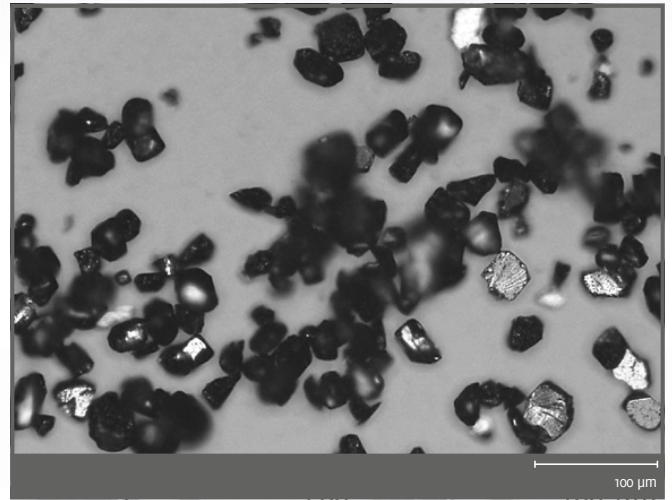
These properties are typical but do not constitute specifications

### Coating Properties

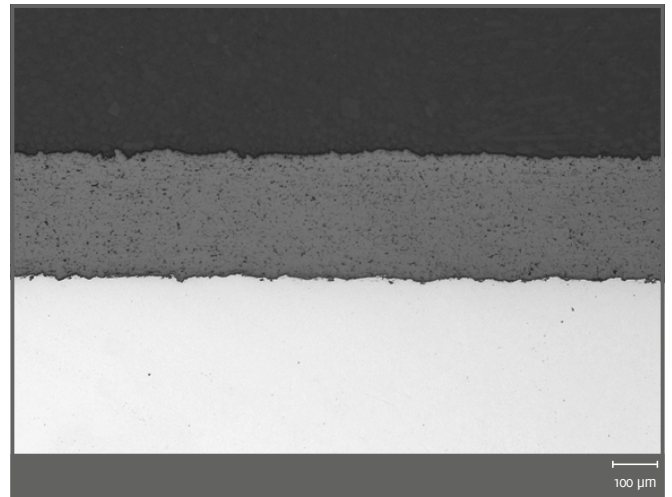
- Hardness: ~ 900HV<sub>0.3</sub>
- Max. Application Temperature: 500°C

### Property Profile (Coating)

- High wear resistance
- Chemical resistance (alkalis and acids)
- Ductility



Micro section



Micro section

